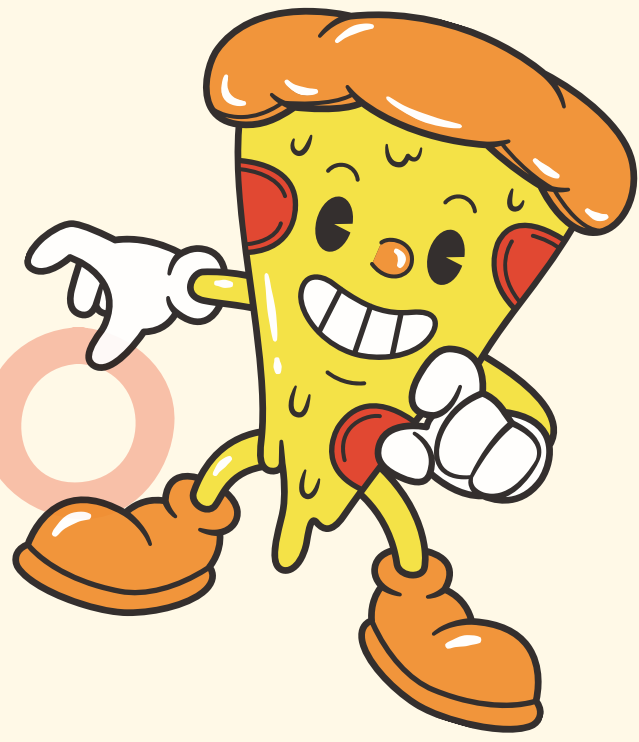


PIZZA MENU



MADE TO ORDER IN-HOUSE

SM 7" 4 SLICES	MED 12" 8 SLICES	LRG 16" 12 SLICES
-------------------	---------------------	----------------------

MORE CHEESE PLEASE PIZZA

THE NAME SAYS IT ALL!

\$10	\$16	\$20
------	------	------

DOUBLE PEP

100% MOZZARELLA & DOUBLE THE PORTION OF PEPPERONI

\$11	\$17	\$22
------	------	------

EAT MORE MEAT PIZZA

FOR THE MEAT LOVER IN YOU, PEPPERONI, SAUSAGE, HAM

\$12	\$20	\$23
------	------	------

GARDEN D'LITE

VEGGIE PIZZA WITH ALL YOUR FAVORITES STRAIGHT FROM THE GARDEN

\$12	\$19	\$22
------	------	------

ALOHA PIZZA

THE CLASSIC HAWAIIAN PIZZA WITH CHEESE, HAM AND FRESH PINEAPPLE...IF YOU ARE FEELING FRISKY TRY IT WITH JALAPENO

\$12	\$19	\$23
------	------	------

MARGHERITA PIZZA

A LIGHT PIZZA WITH OLIVE OIL, GARLIC, FRESH BASIL, FRESH TOMATOES AND MOZZARELLA CHEESE. PERFECT WITH COLD DRINK ON A HOT SUMMER NIGHT

\$12	\$18	\$21
------	------	------

CHICKEN ALFREDO

COMBINES TWO OF YOUR FAVORITES: CHICKEN ALFREDO AND PIZZA! MADE WITH ALFREDO CREAM SAUCE INSTEAD OF THE TRADITIONAL TOMATO

\$13	\$20	\$24
------	------	------

EXTREME SUPREME

A GENEROUS PORTION OF BOTH VEGGIES AND MEATS

\$13	\$20	\$23
------	------	------

MAKE IT YOUR WAY(SINGLE TOPPING)

BUILD YOUR OWN PIZZA (\$1.00 PER ADDITIONAL TOPPING)

\$11	\$16	\$20
------	------	------

EXTRA CHEESE	PEPPERONI	SAUSAGE
HAM	CHICKEN	MUSHROOMS
BELL PEPPERS	JALAPENO	PINEAPPLE

Thank you!